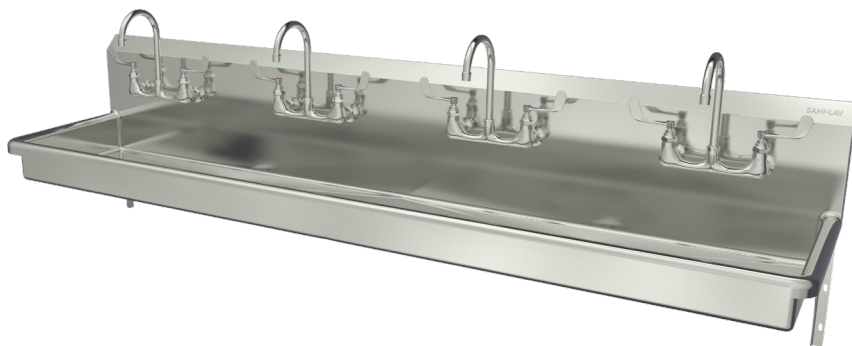


## 4-Person Wall Mount Stainless Steel Wash Station

Model	Flow-Rate
5A5F	Standard 2.0 GPM
5A5F.5	Low-Flow 0.5 GPM



### Product Specifications

Ideal for use in the medical and clean room applications. Built to last using 16-gauge, type 304 stainless steel. Exposed surfaces have a satin finish.

Outside Dimensions	88" x 20" x 15" High
Inside Bowl Size	85" x 16-1/2" x 5" Deep
Back Splash Height	10"
Water Activation	Manual Faucet with 4" Handles
Faucet Mounting Center	8"
Faucet Mounting Holes	7/8"
Flow Rate	2 GPM
Inlet Connections	1/2" Male NPT
Drain Opening	2"
Finish	Satin
Strainer	1-1/2" dia. Duo Basket Strainer
Wall Mounting Bracket	1/4" dia. Mounting Holes

### Includes

- (1) Four-person wall mount wash station
- (4) 8" on center faucets
- (4) Faucet mounting kit
- (2) Wall-mounting brackets
- (4) Support brackets, mounting bolts and washers
- (2) Strainer assembly with basket

### Product Compliance

NSF/ANSI 2 Food Equipment  
NSF/ANSI 61, Section 9  
ASME A112.18.1/CSA B125.1  
ADA Compliant



Part: \_\_\_\_\_ Quantity: \_\_\_\_\_

Project: \_\_\_\_\_

Contact: \_\_\_\_\_

Date: \_\_\_\_\_

Approval: \_\_\_\_\_

Notes:

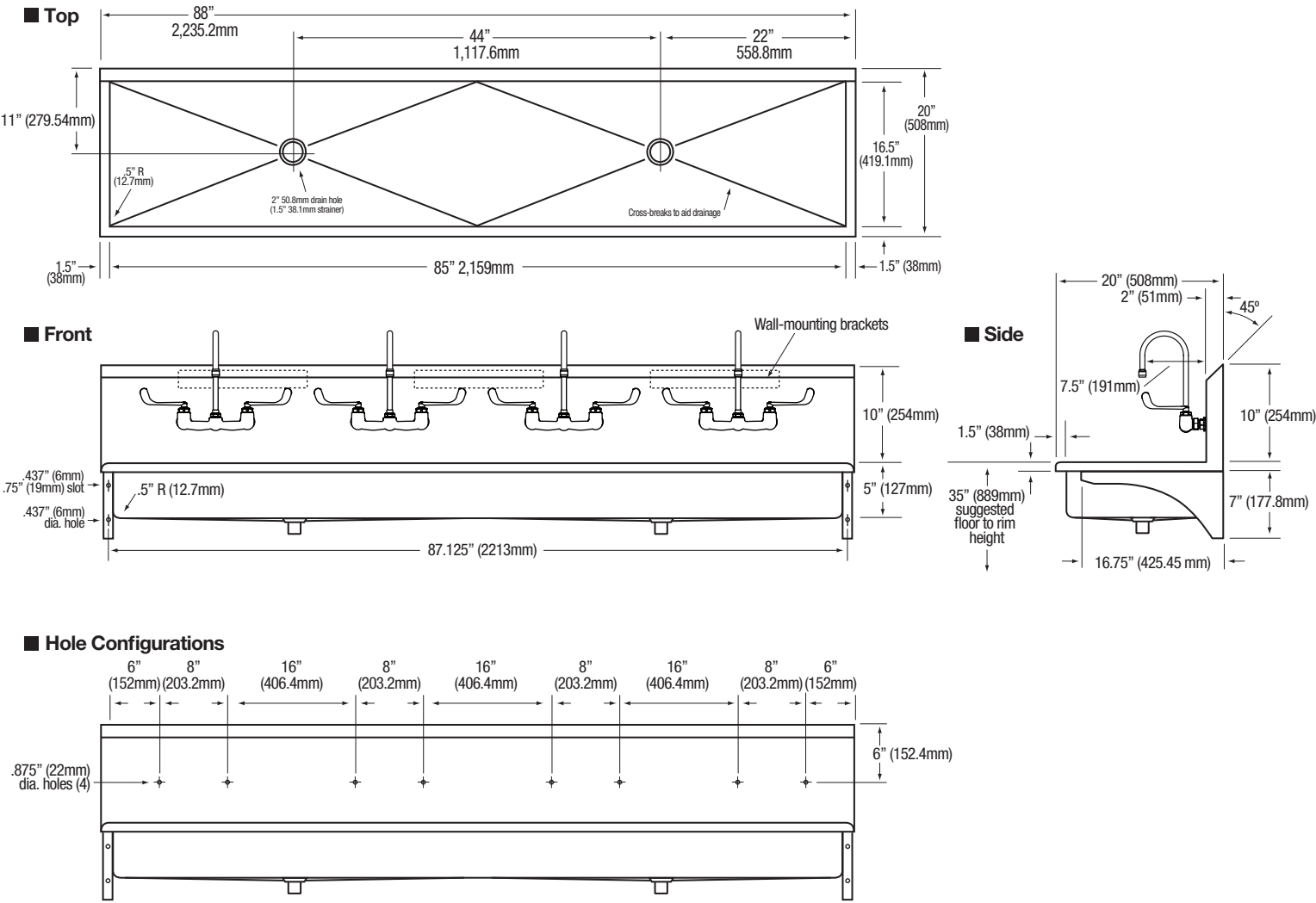


**WARNING:** Equipment that include faucets on this page may contain a chemical known to the State of California to cause cancer, birth defects or other reproductive harm.

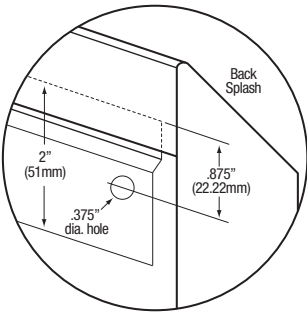
**COLUMBIA PRODUCTS**  
800.626.2117 • columbiasinks.com • info@columbiasinks.com

©2023 Columbia Products

4-Person Wall Mount Stainless Steel Wash Station  
Models 5A5F and 5A5F.5



■ **Wall Mounting Detail**



■ **Supply Line Detail**

