

2-Person Hands-Free Wall Mount Stainless Steel Wash Station

Model	Sensor Type	Flow-Rate
5A2A	AC Powered	Standard 2.0 GPM
5A2A-0.5	AC Powered	Low-Flow 0.5 GPM
5A2B	Battery Powered	Standard 2.0 GPM
5A2B-0.5	Battery Powered	Low-Flow 0.5 GPM



Product Specifications

Hands-Free operation is ideal for use in food service applications. Built to last using 16-gauge, type 304 stainless steel. Exposed surfaces have a satin finish.

Outside Dimensions	48" x 20" x 15" High
Inside Bowl Size	45" x 16-1/2" x 5" Deep
Back Splash Height	10"
Water Activation	AC or Battery Powered Sensor Faucet
Flow Rate	2 GPM
Inlet Connections	3/8" Male Compression
Drain Opening	2"
Finish	Satin
Strainer	1-1/2" dia. Duo Basket Strainer
Wall Mounting Bracket	1/4" dia. Mounting Holes

Includes

- (1) Two-person wall mount wash station
- (2) AC or battery powered sensor faucet assembly
- (2) Wall mounting brackets
- (2) Support brackets
- (2) Mixing check valve
- (1) Strainer assembly with basket

Product Compliance

NSF/ANSI 2 Food Equipment
NSF/ANSI 61, Section 9
ASME A112.18.1/CSA B125.1
ADA Compliant



Part: _____ Quantity: _____

Project: _____

Contact: _____

Date: _____

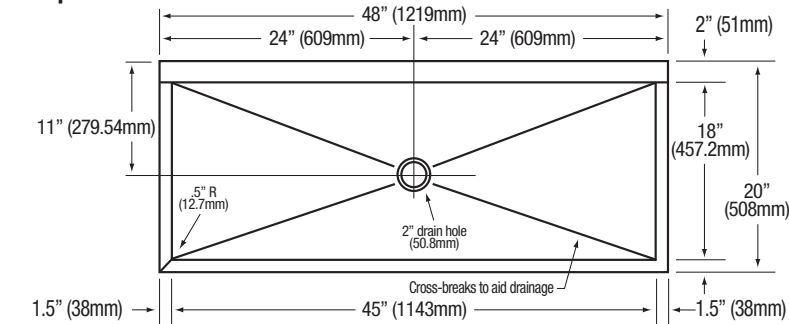
Approval: _____

Notes:

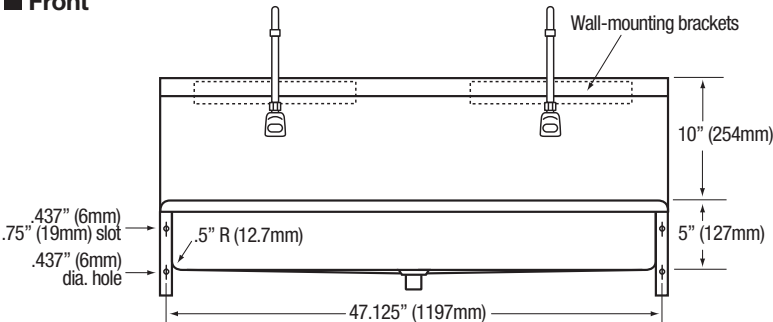


2-Person Hands-Free Wall Mount Stainless Steel Wash Station
Models 5A2A, 5A2A-0.5, 5A2B and 5A2B-0.5

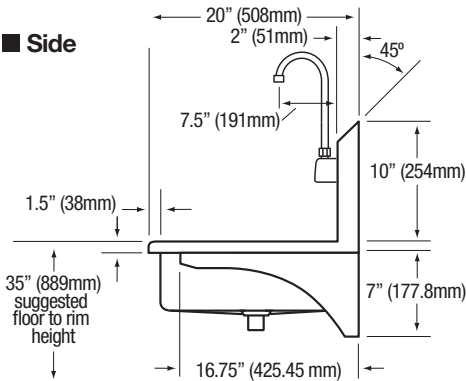
Top



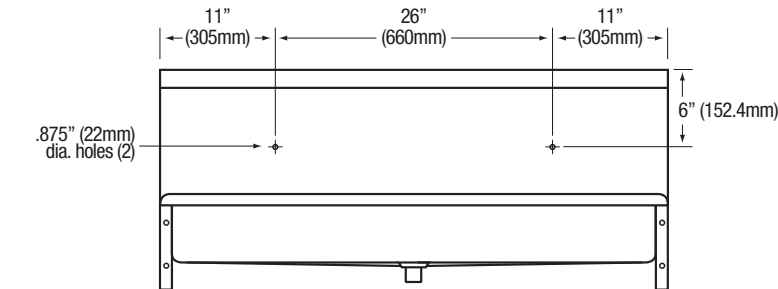
Front



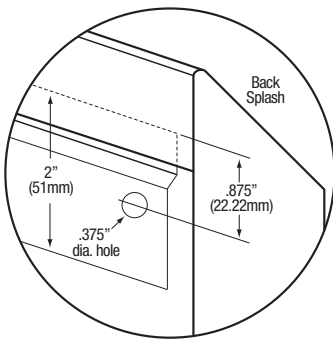
Side



Hole Configurations



Wall Mounting Detail



SANI-LAV Sensor Faucets

Wall Mounted AC and Battery Powered
Meets ANSI/ASME A112.18.1 M-1989



Operation

1. A continuous, invisible beam is emitted from the sensor.
2. The faucet is activated by placing hands under the spout within the effective range of the beam. Water starts to flow immediately for as long as the user's hands remain in the sensor range.
3. When hands are removed, the water flow stops. The sensor will automatically reset and be ready for the next user.
4. In the battery powered version, a flashing red light will indicate a low battery condition.

Specifications

Faucet Construction

Control Circuit

- Auto. Time-out
Solid brass, chrome plated
Solid state, AC or battery, switchable
Preset at 20 seconds and adjustable to 10, 30, or 60 seconds
- Line Purge (request only)
2 minute run every 12 hours or 24 hours
- Scrub Mode Delay (request only)
60, 120, 180 seconds
- Sensor Range
Preset and adjustable
- Shut-off Delay
Presets and adjustable from 1-8 seconds

Control Cable

Solenoid Valve

- Wattage: 0.4W (idle), 5W (in use)
- Operating Pressure: 5 psi to 125 psi

Flow Control

2.0 or 0.5 GPM, Laminar Flow Control

AC Mode

Power Adapter

- Standard Plug-in
Input AC 120V 60 Hz or 220V
Output DC 12V, 0.8A/Class 2
- (UL/CSA)
Power Cable
Armored, vandal resistant
- Optional Multi-Unit Adapter
Serves up to 8 faucets
- (UL/CSA)
Input AC 120V, Output DC 12V, 3A

Battery Mode

Battery Powered Models

(4) AA Alkaline Batteries

Battery Service Life

400,000 on/off cycles, up to 4 years

Package Includes

- (1) Faucet with electronic sensor
- (1) Control box w/6V DC solenoid
- (1) 12V DC plug-in power adaptor (H-6700C, -DC, -LR and -LRDC only)
- (1) In-line filter with clean-out trap
- (1) 18" Flex, S.S. supply tube, 3/8"(1) 6" Gooseneck Spout
- (1) Mounting hardware
- (1) 2.0 GPM Flow Control(4) AA Alkaline batteries (HB-6700C, -DC, -LR, -LRDC only)
- (1) Battery holder (HB-6700C, -DC, -LR, -LRDC only)

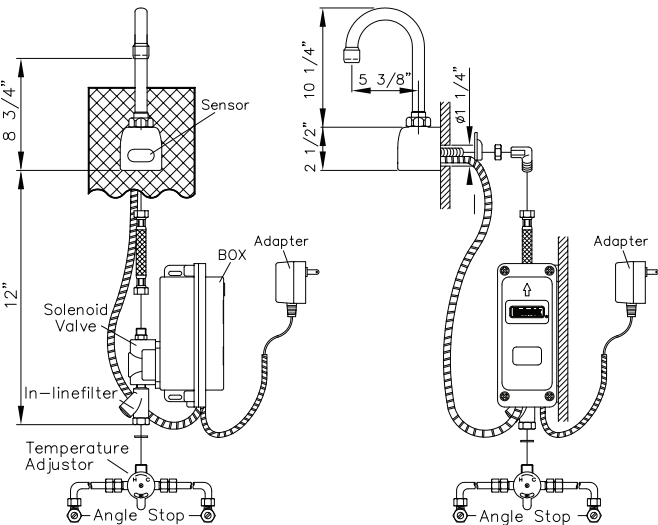
Dimensions

- Base Width (Outside Measurement) 2-1/4"
- Base Depth 2-1/2"
- Faucet Height (Aerator to Base) 8-3/4"
- Faucet Height Overall 12-3/4"
- Depth (Center of Aerator to Center of Faucet Base) 5-3/8"
- Mounting Bolt Length 1-7/16"
- Mounting Bolt Pattern Single-hole mount

Optional Variations and Accessories

- 0.35, 0.5, 1.5, 2.2 GPM Laminar Flow
- HC-010 Multi-Unit Voltage Adapter (AC Powered Only) - 8 units
- HC-0104 Multi-Unit Voltage Adapter (AC Powered Only) - 4 units
- HC-001 Mixing/Check Valve (Mechanical)
- HBL-04-LR Thermostatic Mixing Valve with Checks (Low Lead)
- 8" deep Gooseneck and 6" or 8" Swing Swing SpoutModel

Model	Sensor Type	Flow-Rate
ES2RL	AC Powered	Standard 2.0 GPM
ES2RL-0.5	AC Powered	Low-Flow 0.5 GPM



Model	Sensor Type	Flow-Rate
ESB2RL	Battery Powered	Standard 2.0 GPM
ESB2RL-0.5	Battery Powered	Low-Flow 0.5 GPM

