

## 5-Person Hands-Free Floor Mount Stainless Steel Wash Station

Model	Flow-Rate
510FS	Standard 2.0 GPM
510FS-0.5	Low-Flow 0.5 GPM

### Product Specifications

Constructed from welded #16 gauge type 304 stainless steel. The front, bottom and back are formed from a single sheet with a rolled rim on front and sides. Exposed surfaces have a blended uniform satin finish. Specially designed foot valves provide easy access to working parts without disconnecting mount or plumbing.

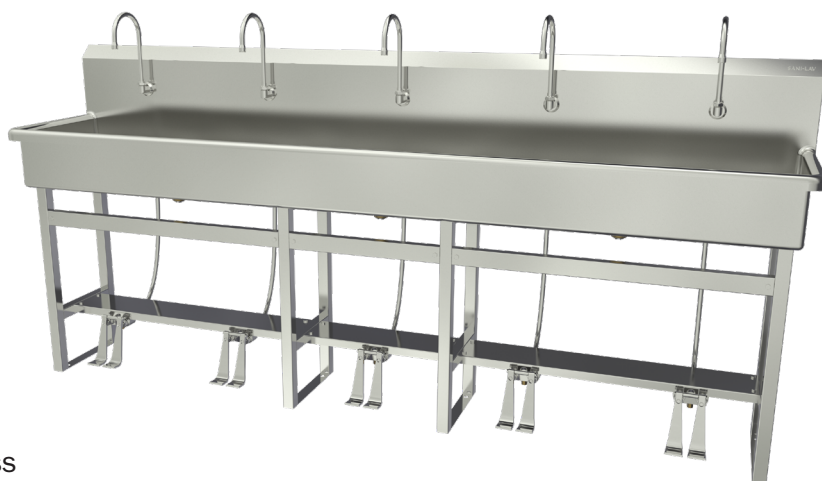
Outside Dimensions	100" x 20" x 45" High
Inside Bowl Size	97" x 16-1/2" x 8" Deep
Back Splash Height	10"
Water Activation	Double Foot Pedal Valve
Flow Rate	2 GPM
Inlet Connections	1/2" Male NPT
Drain Opening	2"
Finish	Satin
Strainer	1-1/2" Dia. Duo Basket Strainer

### Includes

- (1) Floor mount wash station
- (1) Leg assembly set
- (8) Washers and nuts for connection sink to leg assembly set
- (5) Double foot pedal valve (bottom mount) with 2 nuts
- (5) Swivel gooseneck spout with aerator
- (5) Connecting tube for valve to spout connection
- (10) Fittings, brass, 0.375" male compression and 0.375" male NPT
- (3) Strainer assembly with basket

### Product Compliance

NSF/ANSI 2 Food Equipment  
NSF/ANSI 372 Low-Lead



Part: \_\_\_\_\_ Quantity: \_\_\_\_\_

Project: \_\_\_\_\_

Contact: \_\_\_\_\_

Date: \_\_\_\_\_

Approval: \_\_\_\_\_

Notes:



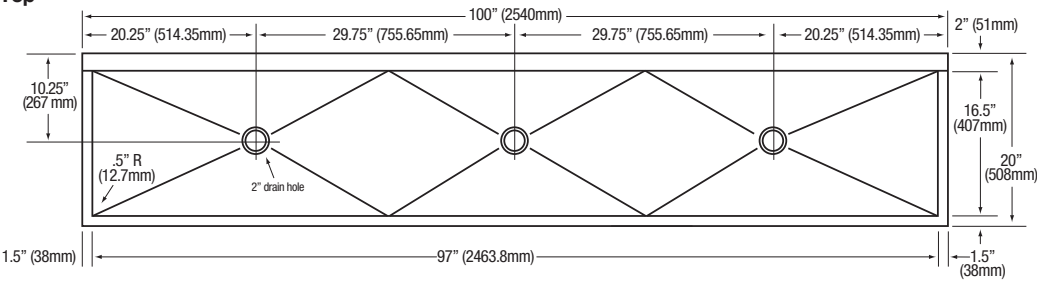
**WARNING:** Equipment that include faucets on this page may contain a chemical known to the State of California to cause cancer, birth defects or other reproductive harm.

**COLUMBIA PRODUCTS**  
800.626.2117 • columbiasinks.com • info@columbiasinks.com

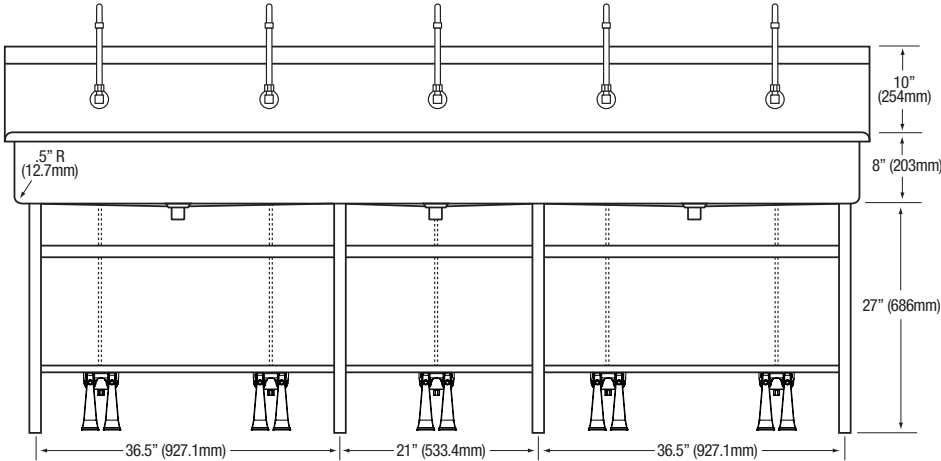
©2021 Columbia Products

5-Person Hands-Free Floor Mount Stainless Steel Wash Station  
Models 510FS and 510FS-0.5

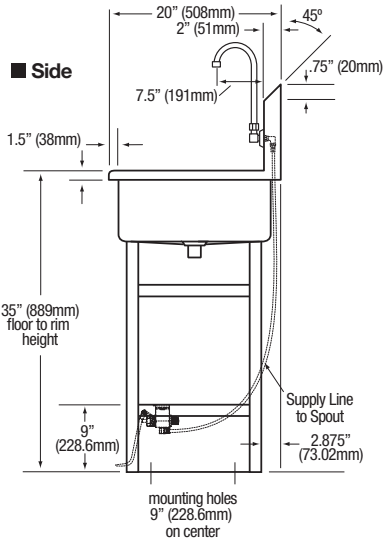
Top



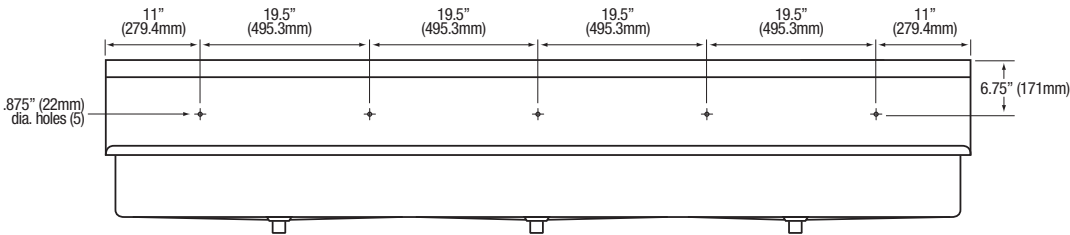
Front



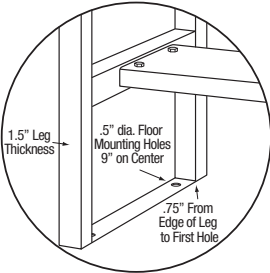
Side



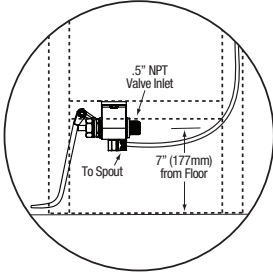
Hole Configurations



Floor Mounting Detail



Plumbing Detail



Supply Line Detail

