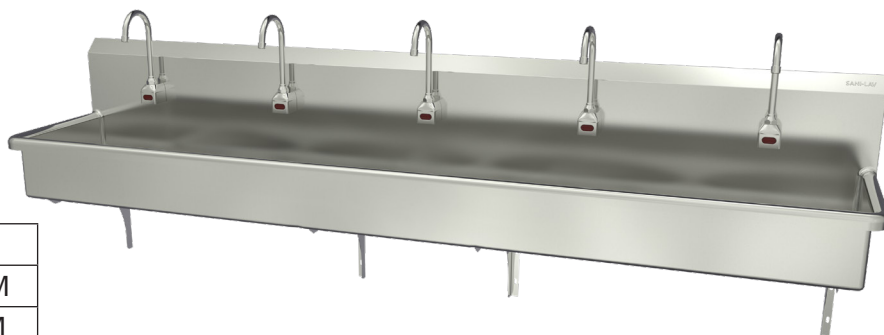


## 5-Person Hands-Free Wall Mount Stainless Steel Wash Station



Model	Sensor Type	Flow-Rate
510WA	AC Powered	Standard 2.0 GPM
510WA-0.5	AC Powered	Low-Flow 0.5 GPM
510WB	Battery Powered	Standard 2.0 GPM
510WB-0.5	Battery Powered	Low-Flow 0.5 GPM

### Product Specifications

Constructed from welded #16 gauge type 304 stainless steel. The front, bottom and back are formed from a single sheet with a rolled rim on front and sides. Exposed surfaces have a blended uniform satin finish.

Outside Dimensions	100" x 20" x 18" High
Inside Bowl Size	97" x 16-1/2" x 8" Deep
Back Splash Height	10"
Water Activation	AC or Battery Powered Sensor Faucet
Flow Rate	2 GPM
Inlet Connections	3/8" Male Compression
Drain Opening	2"
Finish	Satin
Strainer	1-1/2" Dia. Duo Basket Strainer
Wall Mounting Bracket	1/4" Dia. Mounting Holes

### Includes

- (1) Wall mount wash station
- (5) AC or Battery powered sensor faucet assembly
- (4) Wall-mounting brackets
- (4) Support brackets
- (5) Mixing check valve
- (3) Strainer assembly with basket

### Product Compliance

NSF/ANSI 2 Food Equipment  
NSF/ANSI 372 Lead-Free Compliant  
ASME A112.18.1



Part: \_\_\_\_\_ Quantity: \_\_\_\_\_

Project: \_\_\_\_\_

Contact: \_\_\_\_\_

Date: \_\_\_\_\_

Approval: \_\_\_\_\_

Notes:



**WARNING:** Equipment that include faucets on this page may contain a chemical known to the State of California to cause cancer, birth defects or other reproductive harm.

**COLUMBIA PRODUCTS**  
800.626.2117 • columbiasinks.com • info@columbiasinks.com

Technical drawing of a rectangular metal plate with the following dimensions and features:

- Overall Dimensions:**
  - Length: 100" (2540mm)
  - Width: 20" (508mm)
- Internal Dimensions and Spacing:**
  - Top edge spacing: 20.25" (514.35mm), 29.75" (755.65mm), 29.75" (755.65mm), 20.25" (514.35mm)
  - Bottom edge spacing: 1.5" (38mm), 97" (2463.8mm), 1.5" (38mm)
  - Right edge spacing: 2" (51mm), 16.5" (407mm), 20" (508mm)
- Features:**
  - Three circular holes, each labeled "2" drain hole".
  - Corner radius: 5" R (12.7mm).

**Front**

Technical drawing of the front view of the table, showing dimensions and mounting details. The drawing includes the following specifications:

- Top Surface:**
  - Thickness: 10" (254mm)
  - Edge Radius: .5" R (12.7mm)
  - Mounting: Wall-mounting brackets (5 shown)
- Legs:**
  - Height: 48" (1219.2mm) total
  - Top Section: 8" (203mm)
  - Lower Section: 40" (1016mm)
  - Leg Diameter: .437" (6mm)
  - Leg Spacing: 36.5" (927mm) between legs, 21" (533.4mm) between the central support and the side legs.
  - Base: 94" (2387.6mm) total width
- Details:**
  - .75" (19mm) slot
  - .437" (6mm) dia. hole

**Side**

20" (508mm)  
2" (51mm)  
45°  
7.5" (191mm)  
1.5" (38mm)  
35" (889mm) suggested floor to rim height  
16.75" (425.5mm)

Back Splash

2" (51mm)

.875" (22.22mm)

3/8" dia. hole

SANI-LAV Sensor Faucets

Wall Mounted AC and Battery Powered  
Meets ANSI/ASME A112.18.1 M-1989



Operation

- 1. A continuous, invisible beam is emitted from the sensor.
- 2. The faucet is activated by placing hands under the spout within the effective range of the beam. Water starts to flow immediately for as long as the user's hands remain in the sensor range.
- 3. When hands are removed, the water flow stops. The sensor will automatically reset and be ready for the next user.
- 4. In the battery powered version, a flashing red light will indicate a low battery condition.

Specifications

Faucet Construction

Solid brass, chrome plated  
Solid state, AC or battery, switchable  
Preset at 20 seconds and adjustable to 10, 30, or 60 seconds  
2 minute run every 12 hours or 24 hours  
60, 120, 180 seconds  
Preset and adjustable  
Presets and adjustable from 1-8 seconds  
Armored, vandal resistant  
6V DC, normally closed

Control Circuit

- Auto. Time-out
- Line Purge (request only)
- Scrub Mode Delay (request only)
- Sensor Range
- Shut-off Delay

Control Cable

Solenoid Valve

- Wattage: 0.4W (idle), 5W (in use)
- Operating Pressure: 5 psi to 125 psi

Flow Control

2.0 or 0.5 GPM, Laminar Flow Control

AC Mode

Power Adapter

- Standard Plug-in
  - (UL/CSA)
  - Power Cable
  - Optional Multi-Unit Adapter
  - (UL/CSA)
- Input AC 120V 60 Hz or 220V  
Output DC 12V, 0.8A/Class 2  
Armored, vandal resistant  
Serves up to 8 faucets  
Input AC 120V, Output DC 12V, 3A

Battery Mode

Battery Powered Models

(4) AA Alkaline Batteries  
400,000 on/off cycles, up to 4 years

Battery Service Life

Package Includes

- (1) Faucet with electronic sensor
- (1) Control box w/6V DC solenoid
- (1) 12V DC plug-in power adaptor (H-6700C, -DC, -LR and -LRDC only)
- (1) In-line filter with clean-out trap
- (1) 18" Flex, S.S. supply tube, 3/8"(1) 6" Gooseneck Spout
- (1) Mounting hardware
- (1) 2.0 GPM Flow Control(4) AA Alkaline batteries (HB-6700C, -DC, -LR, -LRDC only)
- (1) Battery holder (HB-6700C, -DC, -LR, -LRDC only)

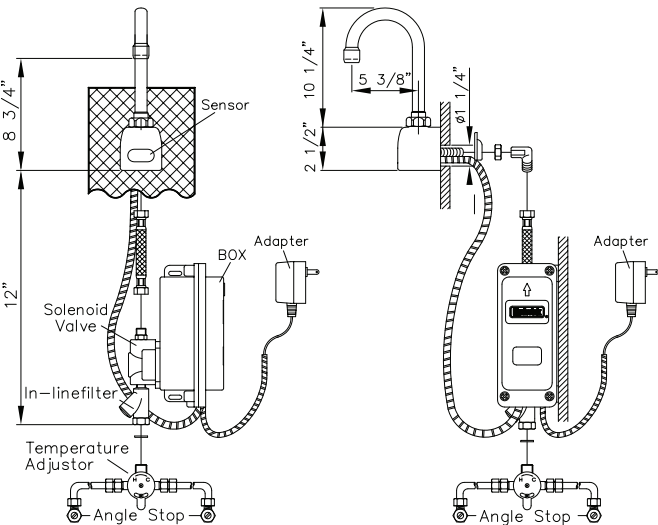
Dimensions

- Base Width (Outside Measurement)
  - Base Depth
  - Faucet Height (Aerator to Base)
  - Faucet Height Overall
  - Depth (Center of Aerator to Center of Faucet Base)
  - Mounting Bolt Length
  - Mounting Bolt Pattern
- 2-1/4"  
2-1/2"  
8-3/4"  
12-3/4"  
5-3/8"  
1-7/16"  
Single-hole mount

Optional Variations and Accessories

- 0.35, 0.5, 1.5, 2.2 GPM Laminar Flow
- HC-010 Multi-Unit Voltage Adapter (AC Powered Only) - 8 units
- HC-0104 Multi-Unit Voltage Adapter (AC Powered Only) - 4 units
- HC-001 Mixing/Check Valve (Mechanical)
- HBL-04-LR Thermostatic Mixing Valve with Checks (Low Lead)
- 8" deep Gooseneck and 6" or 8" Swing Swing SpoutModel

Model	Sensor Type	Flow-Rate
ES2RL	AC Powered	Standard 2.0 GPM
ES2RL-0.5	AC Powered	Low-Flow 0.5 GPM



Model	Sensor Type	Flow-Rate
ESB2RL	Battery Powered	Standard 2.0 GPM
ESB2RL-0.5	Battery Powered	Low-Flow 0.5 GPM

