

# SANI-LAV<sup>®</sup> COLUMBIA PRODUCTS

## Industrial Spray Foamer/Sanitizer Models N2F, N2F48, N2FS and N2FS4



Model N2F



Model N2FS



Model N2F48



Model N2FS4

## Parts List

- ☐ (1) Model N2 spray nozzle
- ☐ (1) Model N2FC aluminum coupler
- ☐ (1) Model N2FL or N2F48L foamer lid kit (includes suction tube and foot strainer)
- ☐ (1) Model N2FSL or N2FSL4 sanitizer lid kit (includes suction tube and foot strainer)
- ☐ (1) 96 oz. or 48 oz. container
- ☐ (1) Model N2FM metering tip kit with 14 colored tips (see chart below)

## Operation

1. Unscrew the lid assembly from container.
2. Use the chart below to select a metering tip.
3. Press the tip firmly into the bottom of the lid assembly. Then install the suction tube onto lid over the metering tip. (Illustration A and B)
3. Fill the container with concentrate. Screw the lid assembly securely onto container to prevent any accidental spillage.
4. Make sure that the aluminum quick connect coupler is attached to the spray nozzle model N2. (Illustration C)
5. Connect hose with  $\frac{3}{4}$ " GHT male threads to model N2 spray nozzle inlet. Turn on the water supply with minimum of 25 PSI.
6. Hold the spray nozzle handle in one hand and the container in the other and squeeze the spray nozzle handle to begin.



Illustration A

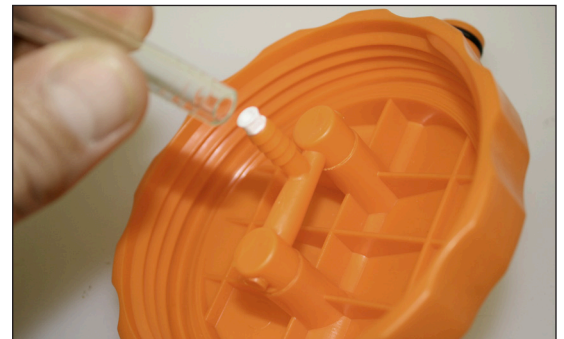


Illustration B

## When using this product you should always:

1. Wear protective clothing and eyewear when dispensing chemicals or other materials or when working in the vicinity of all chemicals, filling or emptying equipment or changing metering tips.
2. Observe safety and handling instructions of the chemical manufacturers.
3. Direct discharge away from you or other persons or into approved containers.
4. Dispense cleaners and chemicals in accordance with manufacturer's instructions. Exercise caution when maintaining your equipment.
5. Clean all equipment after each use in accordance with instruction sheet.
6. Re-assemble equipment according to instruction procedures. Be sure all components are firmly screwed or latched into position.
7. Use only to tap water outlets with a maximum psi of 85.

## Metering Tip Selection

The below listed dilution ratios were found using 40 PSI, cold water and water-thin viscosity (1.0 CP). Ratios will vary based on PSI, water and ambient temperature and viscosity. If no tip is listed then the dilution ratio falls between those shown.

Tip Color	Hole Dia.	Size in Drill No.	Ratio	Oz. Per Gal.
Gray	.128	30	12:01	10
Black	.098	40	*	*
Beige	.070	50	*	*
Red	.052	55	*	*
White	.043	57	14:01	9
Blue	.040	60	16:01	8
Lt. Brown	.035	65	18:01	7
Green	.028	70	26:01:00	5
Orange	.025	72	32:01:00	4
Brown	.023	74	*	*
Yellow	.020	76	42:01:00	3
Aqua	.018	77	*	*
Purple	.014	79	64:01:00	2
Pink	.010	87	128:01:00	1

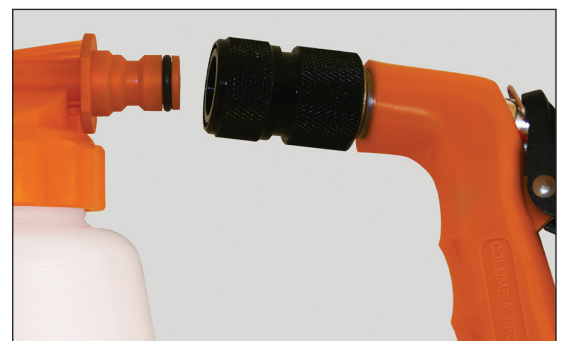


Illustration C

### Notice for California Consumers

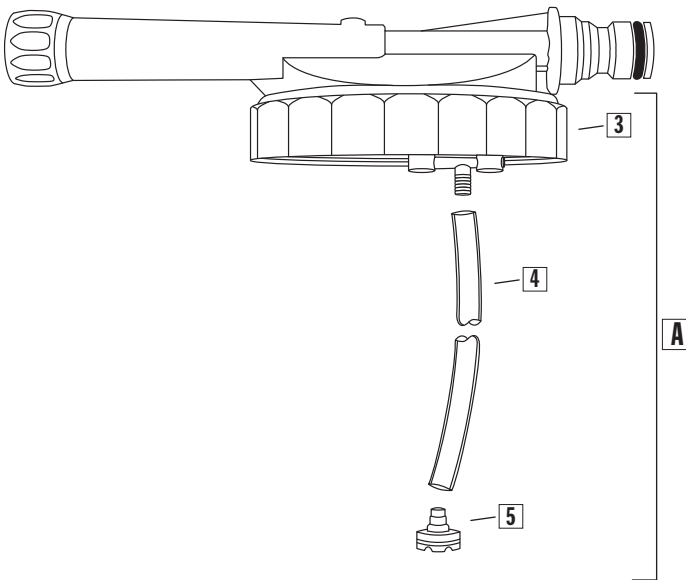


**WARNING:** This product can expose you to chemicals including Lead, and Phthalates (DEHP) which are known to the State of California to cause cancer and birth defects or other reproductive harm. For more information go to [www.P65Warnings.ca.gov](http://www.P65Warnings.ca.gov).

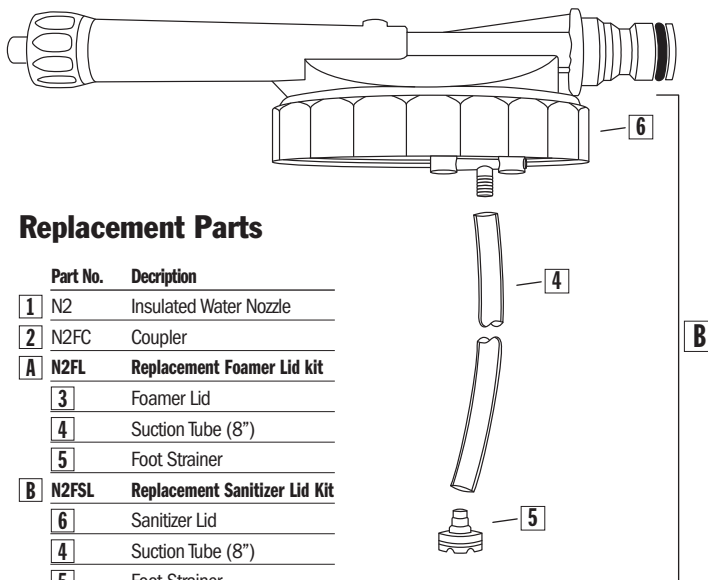
**COLUMBIA PRODUCTS**

800.626.2117 • columbiasinks.com • info@columbiasinks.com

Model N2FL – Foamer Lid

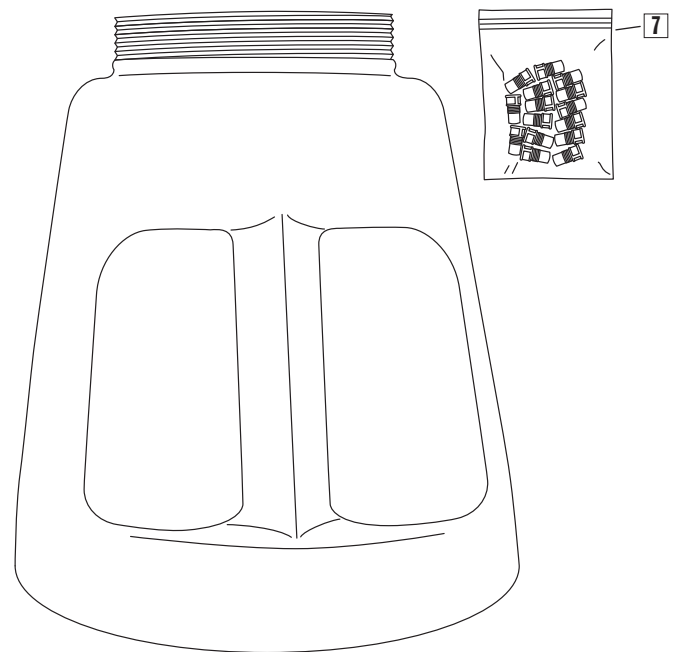
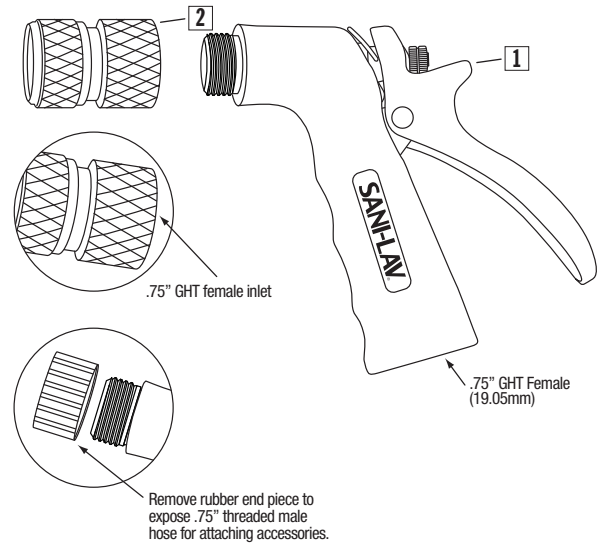


Model N2FSL – Sanitizer Lid



## Replacement Parts

Part No.	Description
1	N2 Insulated Water Nozzle
2	N2FC Coupler
<b>A</b>	<b>N2FL Replacement Foamer Lid kit</b>
3	Foamer Lid
4	Suction Tube (8")
5	Foot Strainer
<b>B</b>	<b>N2FSL Replacement Sanitizer Lid Kit</b>
6	Sanitizer Lid
4	Suction Tube (8")
5	Foot Strainer
7	N2FM Metering Tips (14 qty.)

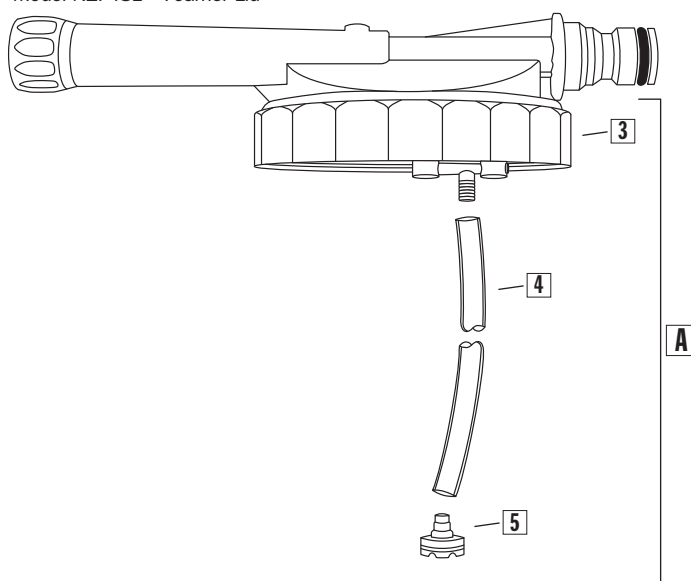


## Trouble Shooting Guide

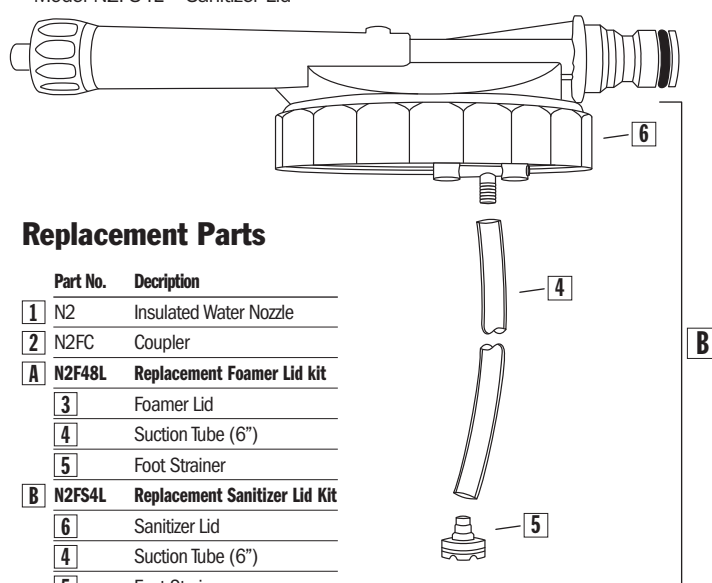
Problem	Possible Cause	Remedy
1. Unit does not draw a concentrate	a. Clogged suction tube strainer b. Metering tip orifice obstructed c. Water pressure too low d. Mineral deposits in barrel of foamer e. Clogged water inlet	a. Clean or replace b. Rinse tip or replace: Do not attempt to clean as it may alter size of orifice c. Minimum 25 PSI required d. Back flush unit. Remove container, suction in tube and metering tip. Put finger over barrel opening. Apply minimal water pressure through garden hose at nozzle of barrel to be flushed. Descale foamer by soaking in weak descaling solution. e. Clean or replace strainer. strainer (low water flow)
2. Weak foaming action	a. Clogged water inlet strainer b. Water pressure too low c. Water temperature too high	a. Clean or replace b. Minimum 25 PSI required c. Use lower temp water source. (Concentrate flow decreases above 140° F water)

If above steps fail to produce good concentrate draw and/or foaming action, replace lid assembly. See component chart previous page.

Model N2F48L – Foamer Lid

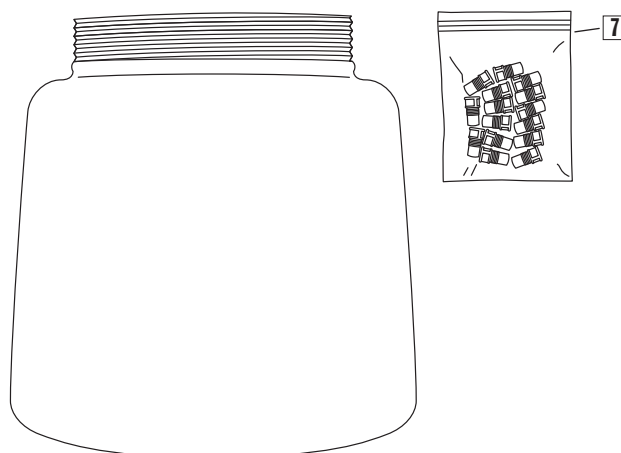
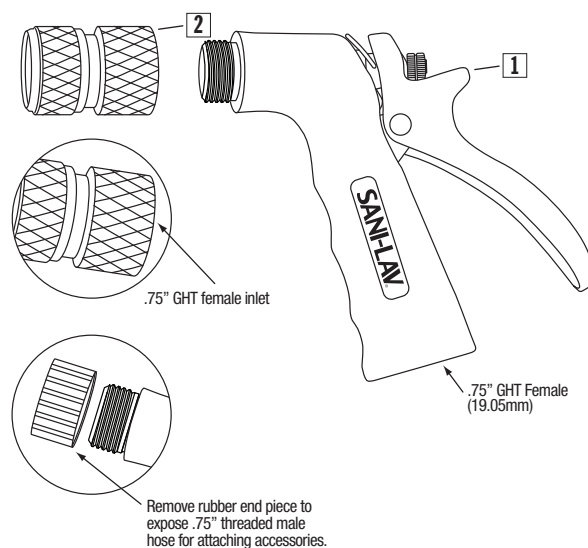


Model N2FS4L – Sanitizer Lid



## Replacement Parts

Part No.	Description
1	N2 Insulated Water Nozzle
2	N2FC Coupler
<b>A</b>	<b>N2F48L Replacement Foamer Lid kit</b>
3	Foamer Lid
4	Suction Tube (6")
5	Foot Strainer
<b>B</b>	<b>N2FS4L Replacement Sanitizer Lid Kit</b>
6	Sanitizer Lid
4	Suction Tube (6")
5	Foot Strainer
7	N2FM Metering Tips (14 qty.)



## Trouble Shooting Guide

Problem	Possible Cause	Remedy
1. Unit does not draw a concentrate	a. Clogged suction tube strainer b. Metering tip orifice obstructed c. Water pressure too low d. Mineral deposits in barrel of foamer e. Clogged water inlet	a. Clean or replace b. Rinse tip or replace: Do not attempt to clean as it may alter size of orifice c. Minimum 25 PSI required d. Back flush unit. Remove container, suction in tube and metering tip. Put finger over barrel opening. Apply minimal water pressure through garden hose at nozzle of barrel to be flushed. Descale foamer by soaking in weak descaling solution. e. Clean or replace strainer. strainer (low water flow)
2. Weak foaming action	a. Clogged water inlet strainer b. Water pressure too low c. Water temperature too high	a. Clean or replace b. Minimum 25 PSI required c. Use lower temp water source. (Concentrate flow decreases above 140° F water)

If above steps fail to produce good concentrate draw and/or foaming action, replace lid assembly. See component chart previous page.