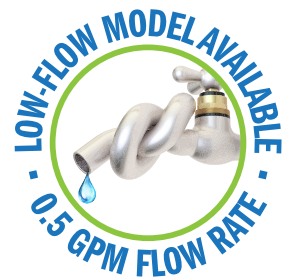


COLUMBIA PRODUCTS

SANI-LAV[®]

Operating Manual for Hands-Free Wall Mounted Surgeons Sink Models S800A and S800B



Columbia does not recommend use with harsh chemicals.
NSF/ANSI Standard 2 - Food Equipment and NSF/ANSI 372 low-lead.

Parts List

- ☐ (1) Wall mount sink
- ☐ (1) AC or Battery powered sensor faucet assembly
- ☐ (2) Wall-mounting brackets
- ☐ (1) Strainer assembly with basket

Tools Required

- ☐ Tape Measure
- ☐ Adjustable Wrench
- ☐ Drill Motor and Drill Bits
- ☐ Pipe Wrench
- ☐ Level
- ☐ Safety Glasses
- ☐ Screw Drivers: 1 Phillips & 1 Standard
- ☐ Pencil
- ☐ Socket Wrench

Installation Instructions

Step 1

1. Establish sink location on the wall.
2. Determine desired height for the top of the backsplash from finished floor and draw a level line which will be the top edge of the wall mounting bracket.
3. Hold the wall mounting bracket against the wall and mark the wall where the holes are. Drill holes and secure bracket to the wall as shown in illustration A. Screws are not provided.

Step 2

1. Install strainer assembly.
2. Install supply lines to sensor faucet head.
3. Install faucets head through mounting hole top center of sink and tightly secure.
4. Plumb hot and cold water to each inline filter

Step 3

1. Position the sink onto wall bracket and fasten to wall.

Step 4

1. Connect waste line to strainer assembly.
2. Mount sensor control box at desired location on wall.
3. Connect power line from sensor to control box.
4. Connect sensor power cable to control box. If Battery powered skip this step
5. Connect hot and cold-water lines from Sensor faucet head to the water source (inline filters).
6. Remove aerator from the spout assembly and flush water system.
7. Check connections for leaks.
8. Replace aerator onto the spout.
9. We recommend sealing top of backsplash to wall as shown in illustration B.

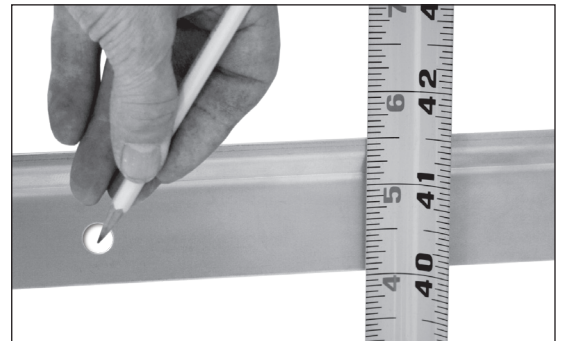


Illustration A



Illustration B

Notice for California Consumers

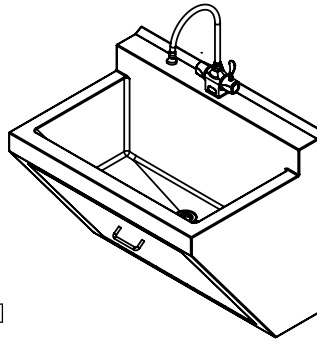
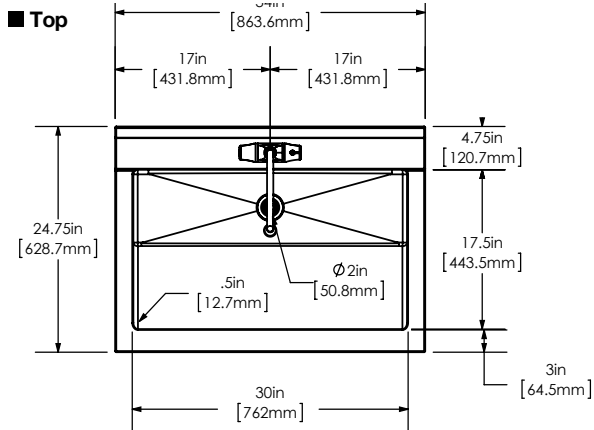
WARNING: This product can expose you to chemicals including Chromium (hexavalent compounds), Lead, and Phthalates (DEHP) which are known to the State of California to cause cancer and birth defects or other reproductive harm. For more information go to www.P65Warnings.ca.gov.

NOTE: Lead content originates from Brass components in valves and faucets and is certified under NSF/ANSI 372 as containing less than 0.25% lead in wetted surfaces.

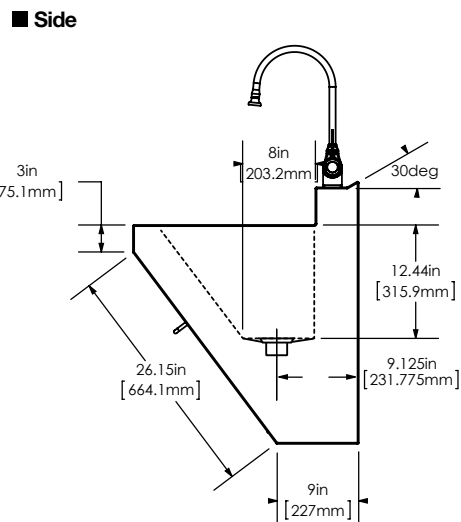
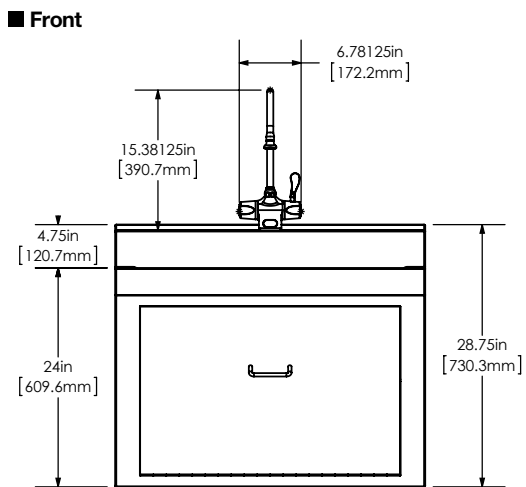
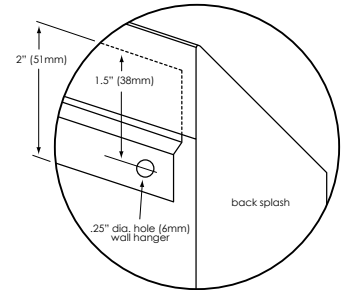
COLUMBIA PRODUCTS

1622 Browning • Irvine, CA • 92606-4809 • Phone: 949.474.0777 • Toll Free: 800.626.2117 • Fax: 949.474.1191 • www.columbiasinks.com • email: info@columbiasinks.com

©2019 Columbia Products



■ **Wall Mounting Detail**



■ **Hole Configuration**

